



3680 Avalon Park East Blvd., Orlando, FL 32828 (407) 207-9088 Fax (407) 207-9089

SITE ANALYSIS REVIEW SERVICES

FIRM INTRODUCTION

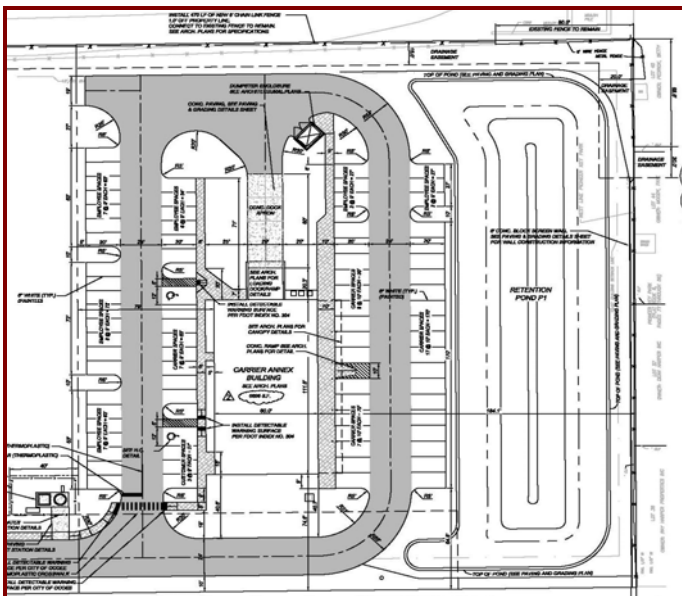
Dave Schmitt created his company on the basis of providing his clients top quality work in a prompt manner while always remembering that excellent customer service is the most important aspect of his company. Dave brings to the table over twenty years of experience in civil engineering including site analysis, planning, drainage design, grading, utility design, roadway design and all aspects of permitting and construction administration services for commercial developments. Additionally, his experience on the land development side of the industry brings an invaluable understanding of the importance of timeliness and responsiveness to clients and how important mentoring the schedule is to the entire process. Dave Schmitt Engineering, Inc. also offers coordination for projects requiring surveying, environmental, geotechnical and landscape architecture services with our many partner consultants. We look forward to speaking with you and discussing your site analysis project needs.

RECENT PROJECTS

The Dave Schmitt Engineering Team has been involved in the following projects:

*Avalon Lakes Office Plaza
Ocoee Carrier Annex ~ U.S. Postal Service
Tuscawilla Greens ~ Congressional Homes
Sonata Health Care ~ Orlando
London Cove ~ City of Cocoa
St. Maximilian Kolbe Catholic Church*

*Reserve @ Alafaya – Morgran Property
Oviedo Carrier Annex ~ U.S. Postal Service
Feltrim Development ~ Mayfair Development
Vascular Medical Office ~ Orlando
Sunset Development ~ Lake Wales
Universal Orlando IOA ~ Harry Potter Ride*





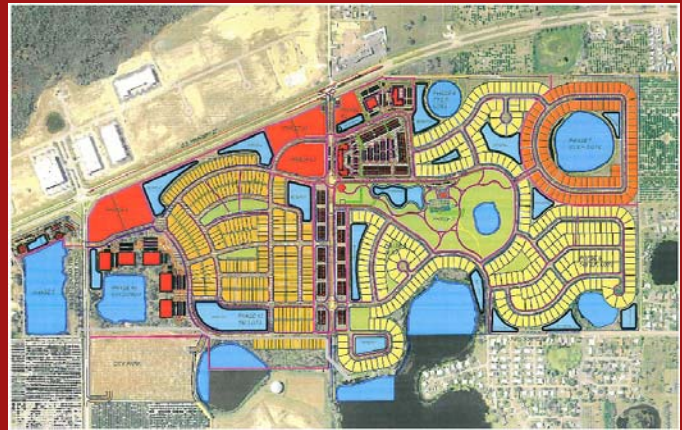
3680 Avalon Park East Blvd., Orlando, FL 32828 (407) 207-9088 Fax (407) 207-9089

SITE ANALYSIS REVIEW SERVICES

SERVICES

We provide site analysis services which include the following information and documents:

- Existing & Future Zoning and Land Use (Geographic Information System [GIS] Map)
- Current Zoning (Property Appraisals Map)
- Any Rezoning or Annexation Requirements
- Set-back requirements
- Open space requirements
- School Facilities
- Local impact fees assessment statement
- Topographic information
- Aerial photos
- Utility availability (Water & Sewer)
- Preliminary drainage pattern requirements
- Flood Rate Insurance Map
- Federal Emergency Management Agency (FEMA) requirements
- United States Department of Agriculture Soil Conservation Service (SCS) Soils Map
- Electric, Gas, Telephone, and Cable providers
- Concurrency Review Application
- Anticipated required off-site requirements
- Permits and Approvals required
- Development Services, Engineering Services and Fee Schedule
- Emergency Medical Services (EMS), Correctional, and Road Impact Fees
- County Water & Sewer Impact and Connection Fees
- United States Geological Survey (USGS) Quadrangle Map



ADDITIONAL SERVICES

For existing entitled or partially constructed sites, we will review the following as well:

- Outstanding development requirements
- Status of permits and entitlements
- Peer review of plans
- Provide or review opinion of probable costs
- Physically review portions constructed for compliance with plans